

Product Type: **Wc mixer with progressive cartridge**
 Product Code: **E183002**
 Product Name: **Atthis Shut Off kit with Wc Mixer**

Description: Wc Mixer con cartuccia progressiva
 Wc Mixer with progressive cartridge





Dimensions: -
 Material: Ottone | brass

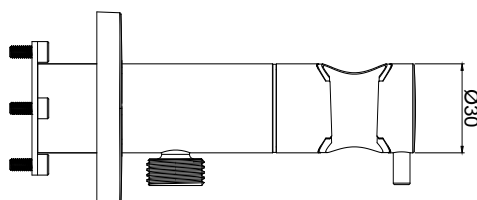
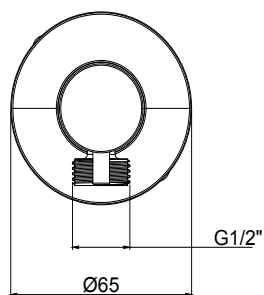
Notes: apertura/chiusura e miscelazione caldo/freddo con cartuccia progressiva
 opening/closing and hot/cold water mixing with progressive cartridge

Functions:  1 Way

Finishes:

		Matt Colours		PVD Polished		PVD Brushed			
Chrome CR	Brushed Nickel BN								
		Matt Black MB	Matt White WM	Gold GO	Deep Black DB	High Brass HB	Copper CO	Gun Metal GM	Absolute Black AB

DIMENSIONS



versione senza modulo incasso - il modulo incasso è da acquistare separatamente (codice E134004)
 version without concealed module - the concealed module is to be purchased separately (code E134004)

PRODUCT CARE

To avoid damages to the purchased equipment, please observe the following recommendations for use:

- Clean the plumbing before connecting the device.
- Periodically clean the water blade to avoid any limestone deposits that could compromise the good functioning.

Advice: The installation of a filter and water-softener system improves and extends the life of the devices and of the plant itself.

CLEANING OF METAL PARTS:

For an easy cleaning of the metal parts of the product, simply use a soft cloth moistened in water and soap or an anti-limestone detergent.

To avoid spots caused by calcium in water, we advise drying with a cloth after each use.

Advice: Please use only natural soap-based detergents avoiding those with alcohol, hydrochloric acid or phosphoric acid, bleach, chlorine etc. and those containing abrasive powders.

PACKING



1 pc
