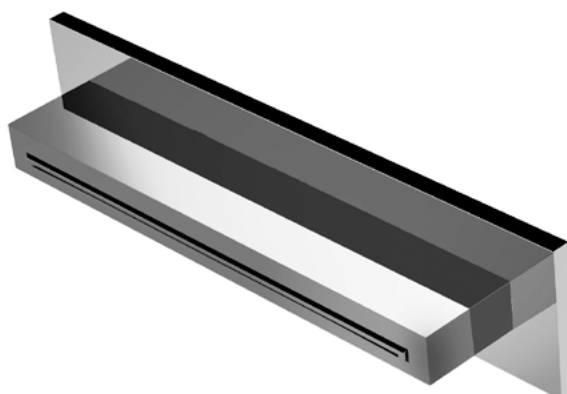











Product Type: **Waterfalls**  
 Product Code: **E044273**  
 Product Name: **XL External Waterfall**  
 Description: Cascata a parete con lama XL  
*Wall Mounted Waterfall with XL blade*  
 Dimensions: 346 x 80 mm  
 Material: Stainless Steel



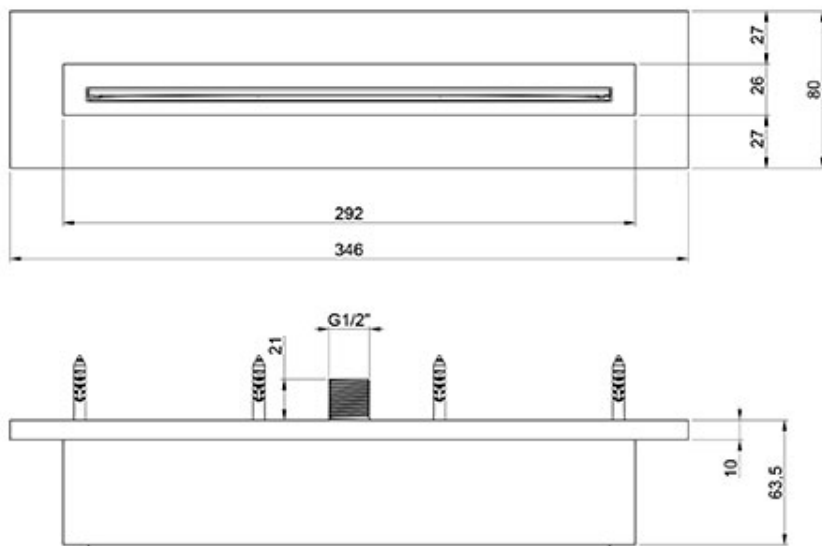
Note: lama XL  
 Notes: XL blade

Functions:  1 Way |  Cascade

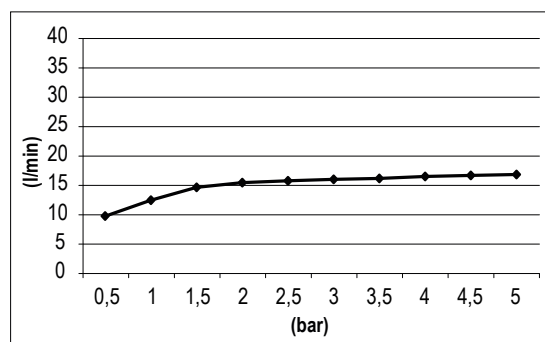
Finishes:

<b>Stainless Steel</b>		<b>Painted</b>		<b>PVD Polished</b>		<b>PVD Brushed</b>		
								
Mirror <b>MS</b>	Brushed <b>BS</b>	Matt Black <b>MB</b>	Matt White <b>WM</b>	Gold <b>GO</b>	Deep Grey <b>DG</b>	High Brass <b>HB</b>	Copper <b>CO</b>	Gun Metal <b>GM</b>

## DIMENSIONS



## FLOWRATE



## PRODUCT CARE

To avoid damages to the purchased equipment, please observe the following recommendations for use:

- Clean the plumbing before connecting the device.
- Periodically clean the water blade to avoid any limestone deposits that could compromise the good functioning.

Advice: The installation of a filter and water-softener system improves and extends the life of the devices and of the plant itself.

### CLEANING OF METAL PARTS:

For an easy cleaning of the metal parts of the product, simply use a soft cloth moistened in water and soap or an anti-limestone detergent.

To avoid spots caused by calcium in water, we advise drying with a cloth after each use.

Advice: Please use only natural soap-based detergents avoiding those with alcohol, hydrochloric acid or phosphoric acid, bleach, chlorine etc. and those containing abrasive powders.

---

## PACKING



1 pcs

---