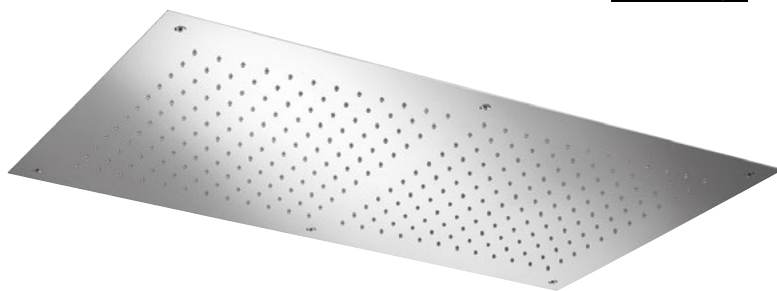


Product Type: **Built-In Head Shower**  
 Product Code: **E044059**  
 Product Name: **Rectangular Multifunction**

Description: Soffione a incasso  
*Built-in Head Shower*

Dimensions: 900x500 mm  
 Material: Stainless Steel



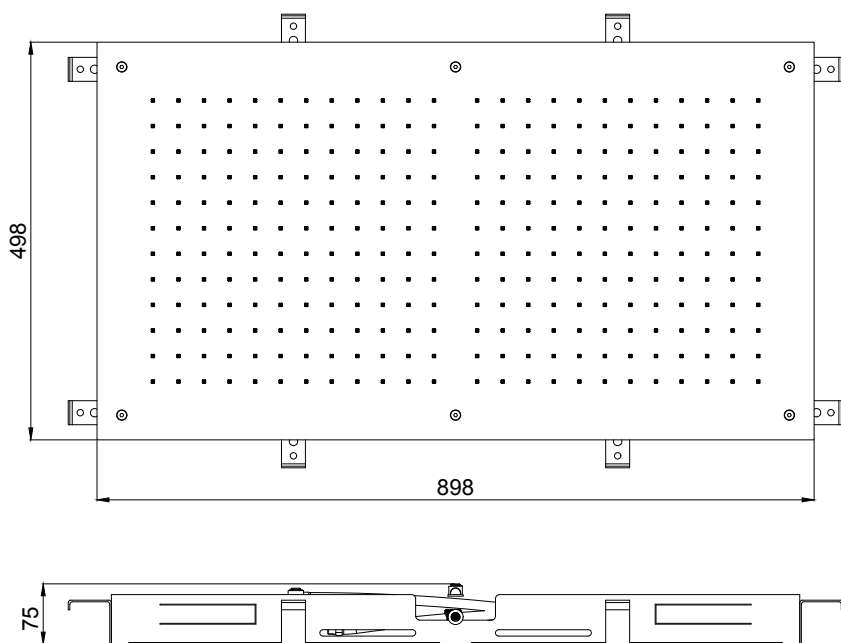
Note: connessioni | *connections* **G1/2" / NPT**  
 Notes: **telaio** incasso e kit di connessione inclusi | *built-in frame* and *connection kit* included  
**completamente ispezionabile** | **completely inspectable**  
 include kit fissaggio **security fix** per soffioni pesanti | *includes security fix kit* for heavy shower heads

Functions: 1 Way | Rain

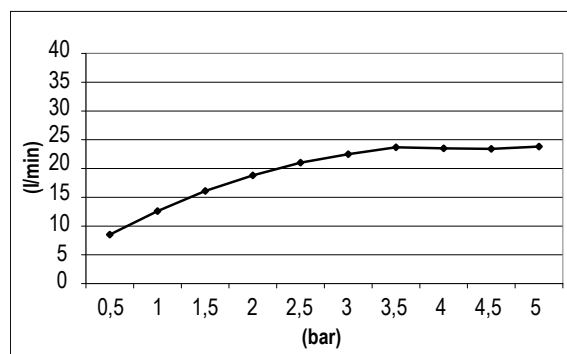
Finishes:

<b>Stainless Steel</b>		<b>Matt Colours</b>	<b>PVD Polished</b>		<b>PVD Brushed</b>			
Mirror <b>MS</b>	Brushed <b>BS</b>	Matt Black <b>MB</b>	Gold <b>GO</b>	DeepBlack <b>DB</b>	High Brass <b>HB</b>	Copper <b>CO</b>	Gun Metal <b>GM</b>	Absolute Black <b>AB</b>

## DIMENSIONS



## FLOWRATE



**MIN: 1 bar | MAX: 5 bar | BEST: 3 bar**

## PRODUCT CARE

To avoid damages to the purchased equipment, please observe the following recommendations for use:

- Clean the plumbing before connecting the device.
- Periodically clean the water blade to avoid any limestone deposits that could compromise the good functioning.

Advice: The installation of a filter and water-softener system improves and extends the life of the devices and of the plant itself.

### CLEANING OF METAL PARTS:

For an easy cleaning of the metal parts of the product, simply use a soft cloth moistened in water and soap or an anti-limestone detergent.

To avoid spots caused by calcium in water, we advise drying with a cloth after each use.

Advice: Please use only natural soap-based detergents avoiding those with alcohol, hydrochloric acid or phosphoric acid, bleach, chlorine etc. and those containing abrasive powders.

---

## CERTIFICATIONS



---

## PACKING



1 pcs